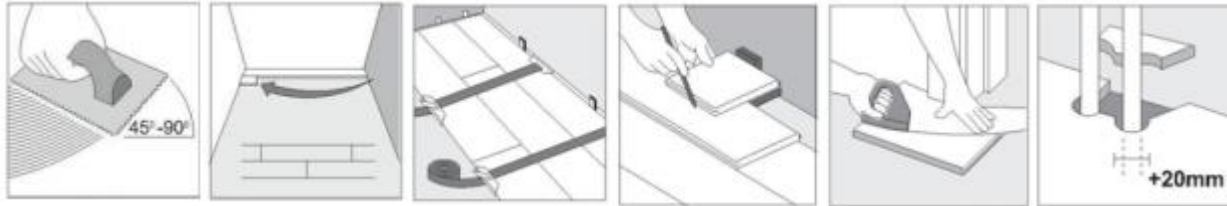


Hardwood Flooring Installation & Maintenance



BEFORE INSTALLATION

PLEASE CAREFULLY EXAMINE THE FLOORING YOU PURCHASED BEFORE INSTALLATION – EXAMINE COLOR, SURFACE, FINISH, QUANTITY, ETC. CONTACT THE DEALER IMMEDIATELY IF THE FLOORING IS UNACCEPTABLE. COMPENSATION AND SERVICE FROM THE MANUFACTURER WILL NOT BE PROVIDED ONCE THE FLOORING HAS BEEN PERMANENTLY INSTALLED.

GLUE DOWN INSTALLATION

TOOLS REQUIRED

Broom or Vacuum, Moisture Meter, Safety Gloves, Measuring Tape, Hand Saw, Chalk, Electric Miter Saw, Floor Cleaner, Hammer, Pry Bar, Wood Flooring Adhesive, Rags, Square Notch Trowel, Mineral Spirits, Adhesive Remover, Straight Edge

INSTALLATION INSTRUCTIONS

1. Mark out a straight line parallel to the chosen wall, allowing a 10mm gap for expansion. It may be necessary to scribe the first row of boards to achieve the correct alignment.
2. Once the first row of boards is correctly aligned and glued into place, weigh them down while the glue sets. Any surplus glue that may seep out onto the surface of the wood must be removed immediately with a damp cloth. The glue should not be applied in the groove or the tongue of the flooring.
3. Continue to fit the boards from the left to the right of the room. Always stagger the end joints by a minimum of 150mm and a maximum of 300mm. Measure and trim the last board to fit, allowing for the 10mm expansion gap. Where possible, use cut-offs to start the next row.
4. Flooring straps can be used to pull board together and hold them into place whilst the glue dries.
5. The expansion gap of 10mm must be maintained during installation.
6. For the last row of boards, you can use the sandwich technique to measure the width of board required, ensuring that the row is no less than 10cm in width.
7. All pipes, pillars, frames, etc. must be cut around to provide suitable expansion gaps.

NAIL OR STAPLE DOWN INSTALLATION

TOOLS REQUIRED

Broom or Vacuum, Moisture Meter, Safety Gloves, Measuring Tape, Hand Saw, Chalk, Electric Miter Saw, Floor Cleaner, Hammer, Pry Bar, Drill, Air Hose, Tapping Block, In-line Air Regulator, Compressor, Pneumatic Nailer / Stapler

INSTALLATION INSTRUCTIONS

1. Select an outside wall as the starter wall, which will likely be straight and square with the room.
2. Mark a straight line parallel to the chosen wall, allowing a 10mm gap for expansion. It may be necessary to scribe the first row of boards to achieve correct alignment.
3. Along the straight line, install the first row of starter boards. The tongue must face away from the chosen wall. Drill pilot holes through the face of the plank (we suggest every 6") in the dark grain. Approximately 1" from the back edge of the board and secure planks with 1" finishing nails.
4. For the first few rows, pre-drill holes, then blind nail at a 45 degree angle through the tongue 1" to 2" from the end joints and every 6" in between along the length of the starter boards.
5. Continue to install the flooring. Always stagger the end joints by a minimum of 150mm and a maximum of 300mm. Measure and trim the last board to fit, allowing for the 10mm expansion gap. Where possible, use cut-offs to start the next row. Nail or staple 1" to 2" from the ends and 3" to 4" thereafter.
6. In case there are gaps between adjacent boards, use a tapping block to help engage the boards together until the tongue-and-groove is flush and tight.
7. For the last row of boards, allow for the expansion along the end wall if it is necessary to cut the width.
8. Drill pilot holes in the face every 6" (try to drill holes in darker portion of the wood) and install with 1" finishing nails. Countersink nails and fill with appropriate colored wood filler. Remove excess filler from the surface with a clean rag and proper cleaner.

CARE AND MAINTENANCE

This flooring is subject to small impressions and scratches. Please take the following precautions to minimize any effect.

- Place a doormat at every entrance
- Use soft protective pads for your tables and chair legs
- Put a protective mat under chairs with wheels
- Avoid long contact with water
- Consider that sunlight will intensify the color of your flooring

The following examples are reasonable and necessary maintenance procedures that should be expected. This list is not exclusive.

- The wood flooring boards should be placed in the room in which they are to be fitted to acclimatize for one week and carefully stacked, in their packaging, to allow air to circulate
- The boards should be stored and laid in a room with relative humidity between 45% and 65%
- The room temperature should be between 18°C and 21°C (65 degrees to 70 degrees Fahrenheit)
- Only cleaning products (such as a Dry Swiffer® by Proctor and Gamble) can be used to clean your floor. Never use wax, polish, abrasive cleaners, or scouring agents as they may dull or distort the finish
- In order to maintain the proper humidity, a humidifier should be used

- Sweep regularly to remove surface grit and dust
- Use a damp cloth or mop to clean up any dirt and footprints, however, avoid using excessive moisture
- All spills must be cleaned up immediately
- Use area rugs in high traffic areas and pivot points
- Use a dolly and protective sheets of plywood when moving heavy objects, furniture, and appliances

CAUTION

- Planks are slippery when wet
- Do not use a wet spray micro fiber mop
- High heels can damage floors
- Use protective pads under furniture legs and feet
- Place doormats at entrance ways to protect floor from discoloration
- Pets with unclipped nails may scratch and damage the floor
- Avoid floor exposure to direct sunlight for prolonged periods of time
- Use drapes or blinds to minimize direct sunlight during peak sunlight hours
- Never use a vacuum with a beater bar head

Please contact your dealer with any questions and concerns.